

AdventHealth University Builds Interactive Curricula



GIDEON saves me a lot of time...it's one tool to get the exact information about diseases I want. I can put in dates and get outbreak maps and the data behind them without having to put it all together myself.

Dr. Christopher Campbell

Associate Professor of Epidemiology,
Vice-Chair of Science, Mathematics and Technology,
Director of Biomedical Programs

The Challenge

Dr. Christopher Campbell and Prof. Cory Edgar from AdventHealth University spoke to GIDEON about how they mold critical thinking related to “drugs & bugs” (as Prof. Edgar refers to the study of infectious diseases).

AdventHealth University’s accelerated 2-year program focuses on medical models of diseases, diagnoses, and treatment plans. They were looking to elevate their students’ educational experiences with real-world clinical decision-making without adding to their busy faculty’s workload.

The Solutions



Enhance outbreak preparedness

Outbreak preparedness is a critical part of working in point-of-care facilities. It includes tracking outbreaks and understanding historical trends.



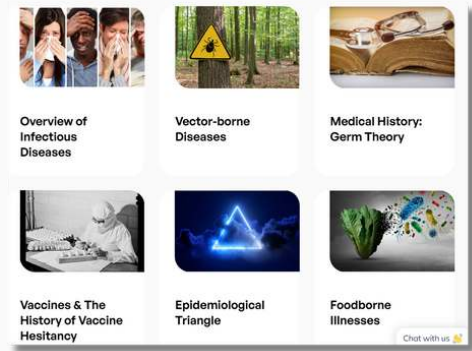
At AdventHealth University, students and faculty use GIDEON to easily download outbreak maps for presentations and reports. An advantage of using a tool like GIDEON is getting access to outbreak and disease maps with their underlying data, which builds in-depth learning.



Complement didactic learning with exercises

Learning is more effectively reinforced with hands-on exercises. However, it can often be difficult to integrate these types of lesson plans into their courses.

At AdventHealth University, faculty can use preexisting GIDEON lesson plans that have been created for educators by educators.

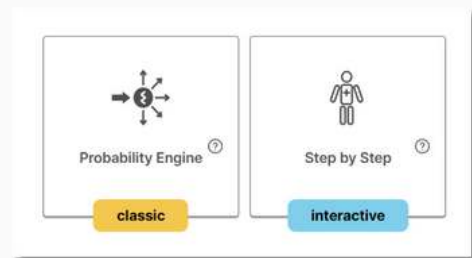


GIDEON lesson plan topics include: disease spread, vaccines, educational models like epidemiological triangles, and much more. These plans provide course guidelines, discussion questions, student worksheets, and even answer keys for faculty.



Simulate real-world clinical differential diagnosis scenarios

With tight timelines, AdventHealth University educators emphasize skill development for jobs in healthcare. This includes preparing students to deal with point-of-care challenges when diagnosing infectious diseases.



Members of the faculty and students can use GIDEON's Diagnose module to input relevant symptoms, the absence of certain symptoms, and patients' travel histories to arrive at a correct diagnosis.

GIDEON tools for busy faculty	1 Outbreak maps	2 Lesson Plans	3 Diagnose module
Add interactive learning without increasing faculty workload	✓	✓	✓
Incorporate clinical diagnostic tools into curricula		✓	✓
Use data visualization for outbreak preparedness	✓	✓	